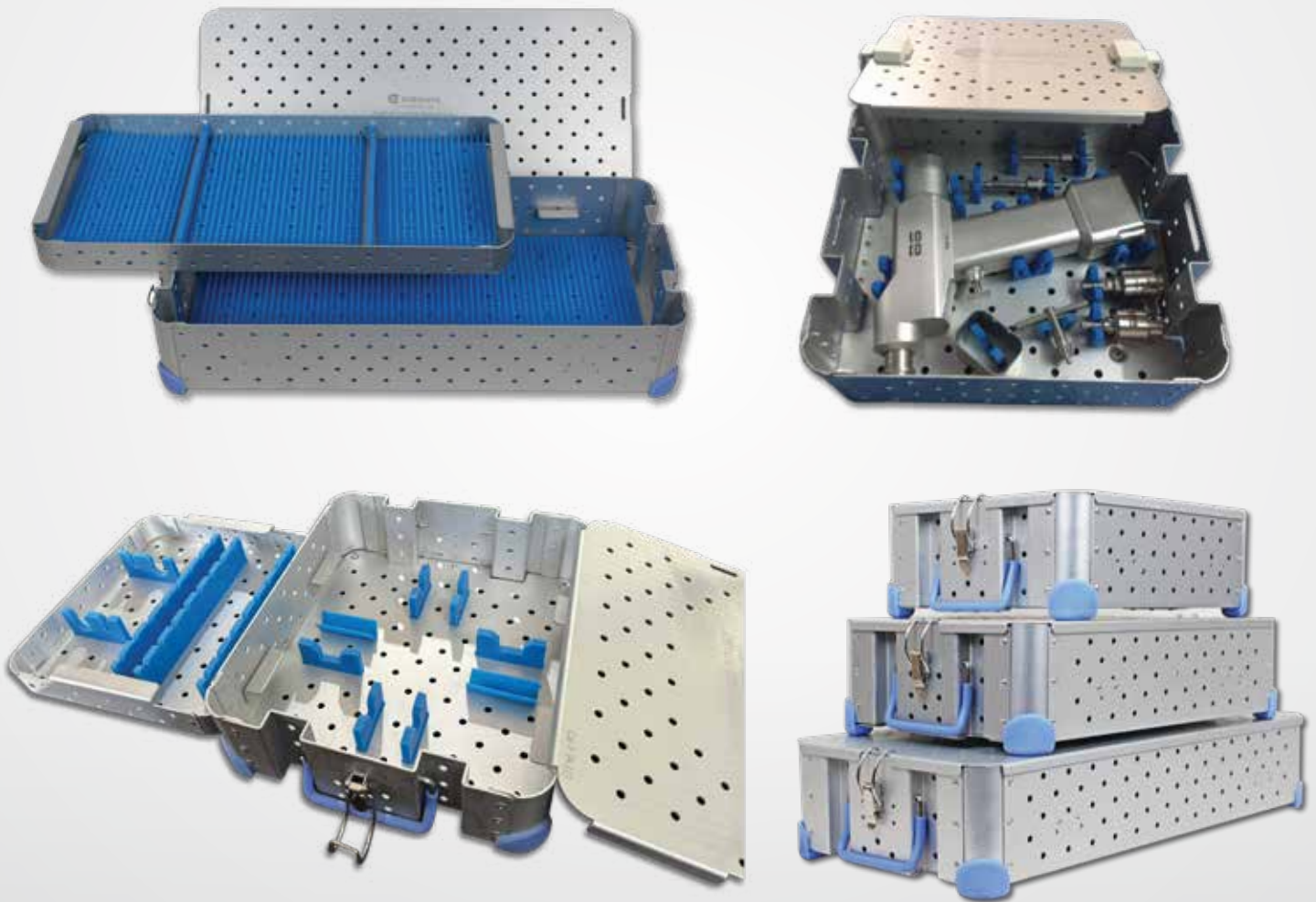


Hybrid Anodised Aluminium Sterilization Trays

CareKIT Series



► Thermal Resistant

► Chemical Resistant

► Light Weight

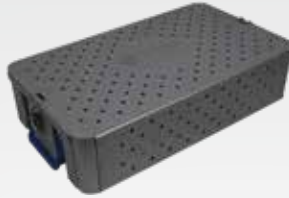
► Compatible with Steam, ETO and Plasma Sterilization

LARGE/DECKER TRAYS

The CareKIT Decker trays helps in conserving the space in arranging instruments. These tray has the option of continuous holders for securing the instruments apart from the Silicon finger mats



▲
A211040 L1



▲
20-A161040 L1



▲
20-A111040

FLAT TRAYS

Our Anodised Aluminium trays accommodate a wide array of delicate instruments.

The entire range of CareKIT trays come with an unique hinged lid. This design provides high ease of use



▲
20-A208020



▲
20-A106020



SMALL TRAYS

The Silicon strips (available as optional) can accommodate instruments with diameters ranging from 2.5 to 8.0 mm

Duramat Silicon mats gently secure instruments

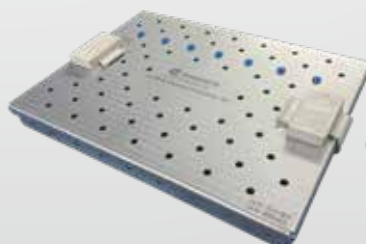
The unique raised silicon (latex free) mats provide efficient ventilation to facilitate drying



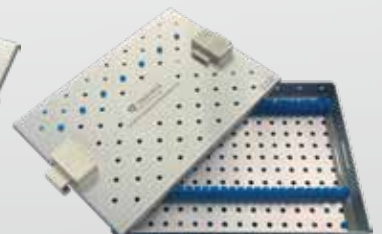
▲
20-A128030



▲
20-A105040



▲
20-A118010



The CareKIT Trays with Bridge offer two layers - a top layer and a bottom layer. This allows the instruments to be placed in both the layers and hence accommodate more instruments. These trays are perfect for surgical sterilization and instrument storage. With the Bridge tray identification of the tip of the instruments becomes easier as the instruments are kept in the horizontal position.

BRIDGE TRAYS



▲
20-A211070 B

MESH/ BASKET PERFORATED TRAYS



▲
22-201020W

Wire Mesh trays can be used for Rinsing & Cleaning of instruments, Sterilization cycles, transportation as well as storage. Excellent Air Removal from the Wire Mesh (Effective Pre-Vacuum cycles) as against in the Instrument Trays which have air trapped inside Steam Penetration is extremely efficient due to the open mesh design, as compared to regular Instrument trays which do not have any holes/ perforations. This can be used for all types of loads such as Solid/ Hollow/ Porous (Linen).

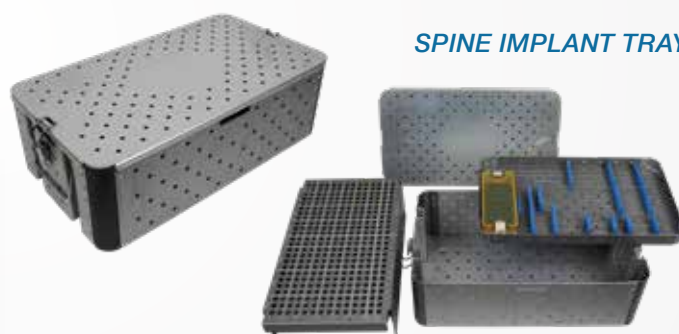
SPINE TRAYS

SPINE INSTRUMENT TRAY



▲
20-A211160 CL3

SPINE IMPLANT TRAY



Implant trays come with the laser marking of the implants specifications along with the rairerg tor ta errente

SCREW TRAYS

Orthopedic screw trays comes with the laser marking of the specifications of the screws like the height and diameter of the screws



▲
20-A211160 CL3



▲
20-A105040 CL1

Anodised Aluminium Perforated Trays and Wire Mesh Trays							
Catalog No	Description/Application	Inches			mm		
	Anodised Aluminium Perforated Large/Decker Trays	L	B	H	L	B	H
20-A111040	Small	11	10	4	279	254	102
20-A161430	Medium	16	14	3	406	356	76
20-A161240	Laparotomy Tray	16	12	4	406	305	102
20-A161040	Medium	16	10	4	406	254	102
20-A161040L1	Arthroscopy/Basic Hip	16	10	4	406	254	102
20-A208020	Flexible Reamer Tray	20	8	2	508	203	51
20-A211040	Craniotomy/ Transplant/Vascular	21	10	4	533	254	102
20-A211030	Large	21	10	3	533	254	76
20-A211060	Basic Hip / C Section / Chest	21	10	6	533	254	152
20-A188030	Large	18	8	3	457	203	76
20-A188040	Bipolar Hemi arthroplasty	18	8	4	457	203	102
20-A211040L1	Laminectomy/Lap Chole	21	10	4	533	254	102
20-A211060L1	Liver Transplant/TKR/THR Tray	21	10	6	533	254	152
20-A211080L2	Large with 2 inner	21	10	8	533	254	203
20-A211160	Laparotomy Tray	21	11	6	533	279	152
20-A211260	Laparotomy Tray	21	12	6	533	305	152
20-A238040L1	Can/Non-Cannulated Reamer Tray	23	8	4	584	203	102
20-A238030	Cannulated Reamer Tray	23	8	3	584	203	76
20-A221470	Omni Retractor Tray	22	14	7	559	356	178
20-A261160L1	Thomson Retractor Tray	26	11	6	660	279	152
20-A271040	Robotic Tray 1	27	10	4	686	254	102
20-A273020	Robotic Tray 2	27	3	2	686	76	51
20-A271340L1	Robotic Tray 3	27	13	4	686	330	102
	Anodised Aluminium Perforated Flat Trays						
20-A136020	Small	13	6	2	330	152	51
20-A111025	Cardiovascular Tray	11	10	2.5	279	254	64
20-A106020	Micro Instruments Tray	10	6	2	254	152	51
20-A106030	Dental Impaction Tray	10	6	3	254	152	76
20-A161025	Neuro Vascular Tray	16	10	2.5	406	254	64
20-A147020	Plastic Surgery Tray	14	7	2	356	178	51
20-A146020	Medium	14	6	2	356	152	51
20-A211025	Neuro Micro Instruments	21	10	2.5	533	254	64
	Anodised Aluminium Perforated Small Trays						
20-A128030	Power Saw Tray	12	8	3	305	203	76
20-A121230	LSCS Tray	12	12	3	305	305	76
20-A126030	Circumcision Tray	12	6	3	305	152	76
20-A105040	Small	10	5	4	254	127	102
20-A101040L1	Proctoscope Tray	10	10	4	254	254	102
20-A105040L1	Nasal Tray	10	5	4	254	127	102
	Anodised Aluminium Perforated/Bridge Trays						
20-A151070B	Medium	15	10	7	381	254	178
20-A211070B	Large	21	10	7	533	254	178
20-A231070B	Extra Large	23	10	7	584	254	178
	Mesh / Basket Perforated Trays						
22-101020W	Wire Mesh Tray - Small 1	10	10	2	254	254	51
22-141425W	Wire Mesh Tray - Small 2	14	14	2.5	356	356	64
22-151220W	Wire Mesh Tray - Small 3	15	12	2	381	305	51
22-151230W	Wire Mesh Tray - Small 4	15	12	3	381	305	76
22-181020W	Wire Mesh Tray - Medium 1	18	10	2	457	254	51
22-181520W	Wire Mesh Tray - Medium 2	18	15	2	457	381	51
22-191030W	Wire Mesh Tray - Medium 3	19	10	3	483	254	76
22-201020W	Wire Mesh Tray - Large 1	20	10	2	508	254	51
22-201230W	Wire Mesh Tray - Large 2	20	12	3	508	305	76
22-221040W	Wire Mesh Tray - Large 3	22	10	4	559	254	102
	Spine Trays						
20-A171060CS	Spine Implants tray	17	10	6	432	254	152
20-A211160CL3	Spine Instrument tray	21	11	6	533	279	152
	Screw & Drill Trays						
20-A105040CL1	Small Screw tray	10	5	4	254	127	102
20-A179053CSF	Small Fragment Screw tray	17	9	5.3	432	229	135
20-A201053CLF	Large Fragment Screw tray	20	10	5.3	508	254	135
20-A111040D	Drill tray	11	10	4	279	254	102
20-A141040D	Drill & Saw tray	14	10	4	356	254	102

GST 12% Applicable

* Silicon mat is optional and not a part of the tray. It has to be ordered separately.

** Custom size trays can be done as per the specification with an MOQ

*** Continuous holder and other individual holders has to be ordered separately.

CERTIFICATION: Endosys Technologies is certified with ISO 9001:2015, ISO 13485:2016 & CE. Our products are classified as Class 1 Medical Devices

Distributed by:



For more information
contact our Sales Representative on
+91-44-2479 7528, +91-93845 60061, +91-93817 12055,
www.endosys.org | mail@endosys.org